



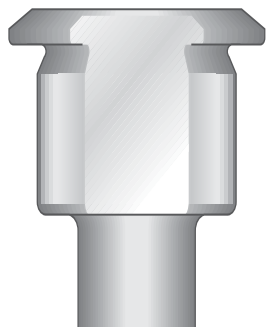
5 Station and 10 Station Trumpf Style Multitool Punches and Dies

New!



5 Station Multitool

Range 0.030(0.70) to 0.630(16.00)
+0.024(0.60) Die Clearance.



Punch

Round PADV0A
Shape PADV_A



Die

Round DADV00
Shape DADV_0

Standard
Shapes



Punches

- Premium tool steel for exceptional interval between regrinds and maximum machine up time.
- 1/4 degree back taper and near polished punch flanks to reduce friction and extend tool life.
- Maxima® coating available for extreme applications.

Dies

- High Speed Steel for extended life between regrinds.
- Uniform corner clearance radii for increased die strength and improved piece part quality.

Punch—Technical Data

Overall Length	1.110(28.20)
Shank Diameter	0.649(16.48)
Straight Before Radius	0.286(7.26)
Material	Premium Tool Steel

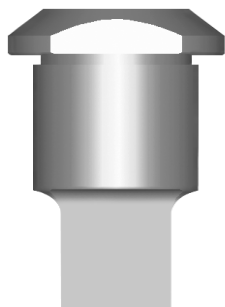
Die—Technical Data

Outside Diameter	0.905(23.00)
Overall Height	0.552(14.02)
Material	High Speed Steel



10 Station Multitool

Range 0.030(0.70) to 0.413(10.50)
+0.024(0.60) Die Clearance.



Punch

Round PADT0A
Shape PADT_A



Die

Round DADT00
Shape DADT_0

Standard
Shapes



Punches

- M4PM™ Particle Metallurgy High Speed Steel with excellent edge-wear resistance for exceptional interval between regrinds.
- 1/4 degree back taper and near polished punch flanks to reduce friction and extend tool life.
- Maxima® coating available for extreme applications.

Dies

- High Speed Steel for maximum life between regrinds.
- Uniform corner clearance radii for increased die strength and improved piece part quality.

Punch—Technical Data

Overall Length	1.051(26.70)
Shank Diameter	0.433(11.00)
Straight Before Radius	0.336(8.53)
Material	M4PM™ Premium High Speed Steel

Die—Technical Data

Outside Diameter	0.629(15.98)
Overall Height	0.394(10.00)
Material	High Speed Steel



mate.com

MATE PRECISION TOOLING

United States

1295 Lund Boulevard • Anoka, Minnesota 55303
Phone 763.421.0230 • 800.328.4492 • Fax 763.421.0285 • 800.541.0285