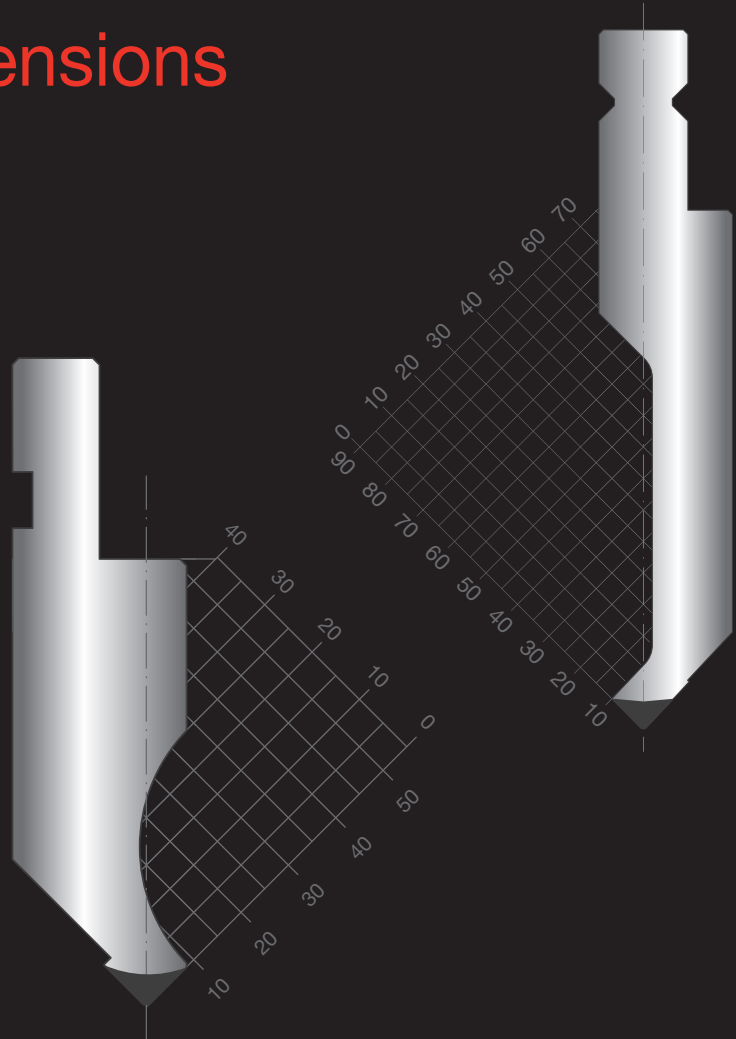


Superior Solutions for Sheet Metal Fabricators

# MATE PRESS BRAKE TOOLING

## Adapters and Extensions



**2015**  
Part Number

### WORLDWIDE HEADQUARTERS:

1295 Lund Boulevard, Anoka, Minnesota 55303 USA  
Tel +1.763.421.0230 Fax +1.763.421.0285  
U.S. Toll Free: Tel 800.328.4492 Fax 800.541.0285  
[mate.com](http://mate.com)



# MATE PRECISION TOOLING

## COMPANY OVERVIEW

Founded in 1962, Mate has grown into a world-class manufacturer of superior products and solutions for sheet metal fabricators. We manufacture tooling for every major CNC punch press, supply and support a wide variety of precision ground press brake tooling, and offer a complete line of CO2 and fiber laser products. Our mission: To be the world's leading supplier of precision tooling for CNC punch presses. Our purpose: Helping sheet metal fabricators produce quality parts faster and more efficiently.



Headquartered in Anoka, Minnesota, in a 300,000 sq. ft. (28,000m<sup>2</sup>) state-of-the-art facility.

## COMMITMENT TO QUALITY

Mate's dedication to quality is not just demonstrated in the products and services we provide, it is a part of every aspect of our business. This commitment was formally recognized when Mate was honored with the Minnesota Quality Award, Achievement level, for 2005. We integrate the Baldrige National Quality Program's criteria into the way we operate and continually measure our progress in improving our products, processes, and service.



## CUSTOMER SATISFACTION GUARANTEED

Customer service is a critical component of Mate's business. Mate's sales engineers are experts in their field working on site with customers to solve fabricating issues. This commitment to customer satisfaction is extended around the world with Mate tooling experts available in every industrialized country. Customer education is available for every product Mate offers and is available 24/7 at [mate.com](http://mate.com). [My.mate.com](http://my.mate.com), a free web-based portal, allows registered users access to previously ordered drawings of special shapes and assemblies. Mate offers an extensive standard product line that can be delivered with same day or next day service and all our products come with a 100% satisfaction guarantee.

## PRODUCTS AND SOLUTIONS THAT WORK

Mate's product engineering team currently holds several national and international patents and continues to develop products that push the boundaries of manufacturing technology. Our state-of-the-art customer solution center is an integral part of this process. It allows us to develop and test new tooling concepts and designs, and focus on proving the viability of value-added products while reducing the time needed to bring these products to market. The customer solution center also allows us to replicate the end user's environment and needs in every way. We work closely with the world's leading sheet metal fabricators and punch press manufacturers conducting research and evaluating new products. These partnerships bring to Mate a combined effort to continually offer customers superior products with proven solutions.

## SPANNING THE GLOBE

Mate has over 80 dealers providing products and services in every industrialized country. Our dealers are thoroughly trained to assist with all tooling needs from simple hole punching to complex special applications. Mate recognized the need for an international specialist in the punch press tooling field and has been serving the international market since 1967. Our commitment to serving manufacturers around the world was formally recognized when Mate was presented with the President's "E" Certificate for Exports by the Secretary of Commerce in 1996. Today, more than 50% percent of Mate's revenue has come from outside the United States. We are committed to improving manufacturing technology around the world by helping established and emerging manufacturers produce quality parts faster and more efficiently.






[Dimensions in Inches (mm)]

# TABLE OF CONTENTS AND MATERIAL SPECIFICATIONS

<b>Mate Press Brake Tooling Adapters &amp; Extensions</b>		<b>Clamp Plates</b>	
From European Precision Style		Clamp Plates for Adapters 9	
To Wila Trumpf Style Punch and Die Adapters 4		<b>European Precision Style Adapters</b>	
From Wila Trumpf Style		Manual and Adjustable Adapters 10	
To European Precision Style Punch and Die Adapters 5		<b>Clamping</b>	
From American Style		SWING™ Fast Manual Clamping 11	
To European Precision Style Punch and Die Adapters 6		<b>Polyurethane</b>	
Extensions		Polyurethane Holders 12	
European Precision Style Punch and Die Extensions 7		Polyurethane 13	
Wila Trumpf Style Punch and Die Extensions 8		<b>Solution Gallery</b>	
		Images 14-15	

**Catalog Key:**




Material Type	Base Material	Base/Core Hardness	Wear Surfaces Induction Hardened	Depth of Induction Hardness	Application	Tonnage limits
Gray 	C45	20-24 HRC	58-60 HRC	3-4mm (0.118-0.158"")	Most common tool profiles, high force capable	50 to 100 tons/meter (17 to 34 tons/ft)
Red 	C45	20-24 HRC	58-60 HRC	3-4mm (0.118-0.158"")	Tool profiles having thinner or taller cross sections	35 to 70 tons/meter (12 to 24 tons/ft)
Yellow 	42 CrMo4	20-24 HRC	58-60 HRC	3-4mm (0.118-0.158"")	Tool profiles having thin cross sections	15 to 60 tons/meter (5 to 20 tons/ft)

**HOW TO READ A MATE® PART NUMBER**

Example: **012.345S**

The numerical component identifies the tool profile. A profile is the image of a tool as shown in the catalog. The character component is used to identify the length of the tool.

The character component code is:

	M	Half Length
	S	Full Length
	F	Segmented Length

A number inside the arrow identifies the actual length of the tool in millimeters.

For example:  415 mm

[Dimensions in Inches (mm)]

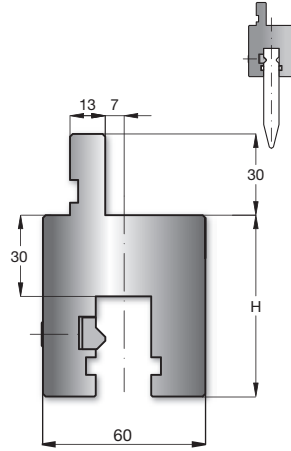


# EUROPEAN PRECISION STYLE TO WILA TRUMPF STYLE

## PUNCH ADAPTERS

150 mm

	L	H	T/mt	Mt
<b>50.430</b>	150	67.00	100	▶

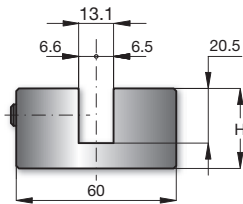
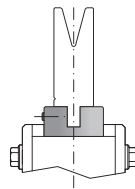


## DIE ADAPTERS

500 mm

1000 mm

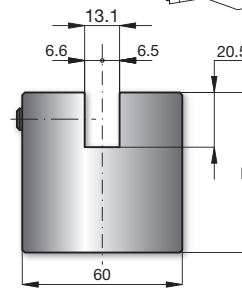
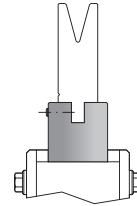
	H	T/mt	Mt
<b>60.910</b>	30.00	100	▶



500 mm

1000 mm

	H	T/mt	Mt
<b>60.920</b>	60.00	100	▶



[Dimensions in Inches (mm)]

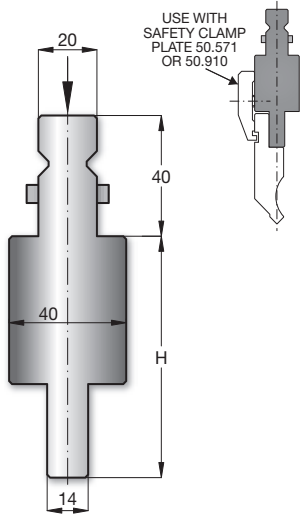
# WILA TRUMPF STYLE TO EUROPEAN PRECISION STYLE

## PUNCH ADAPTERS

150 mm

L H T/mt Mt

50.970 150 80.00 100 ▶

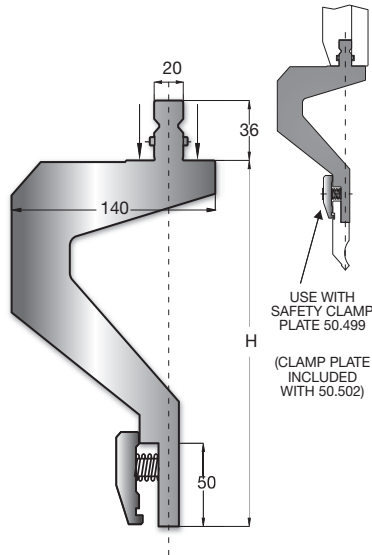


(WITH TANG PIN)

200 mm

L H T/mt Mt

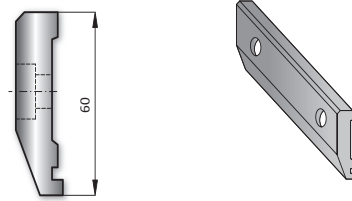
50.502 200 220.00 90 ▶



(WITH TANG PIN)

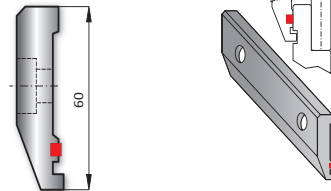
## CLAMP PLATES FOR ADAPTERS L=150mm

50.571



SAFETY CLAMP PLATE

50.910



SAFETY CLAMP PLATE WITH POLYURETHANE  
FOR SEGMENTED PUNCHES

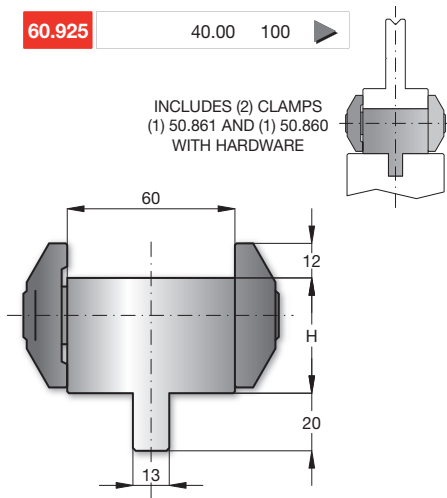
## DIE ADAPTERS

415 mm

835 mm

H T/mt Mt

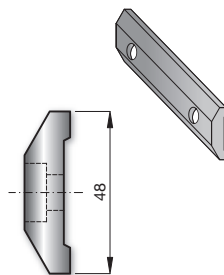
60.925 40.00 100 ▶



INCLUDES (2) CLAMPS  
(1) 50.861 AND (1) 50.860  
WITH HARDWARE

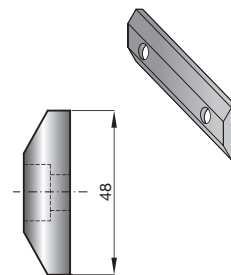
## CLAMP PLATES FOR DIE EXTENSION

50.861



CLAMP PLATE FOR  
DIE EXTENSION

50.860



CLAMP PLATE FOR  
DIE EXTENSION

[Dimensions in Inches (mm)]

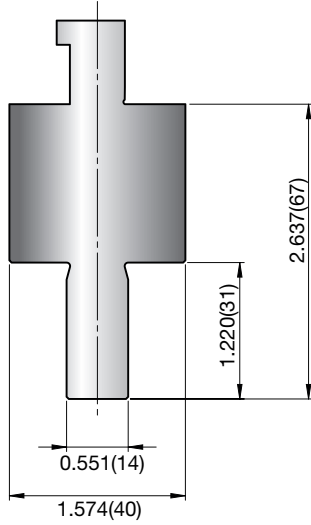


# AMERICAN STYLE TO EUROPEAN PRECISION STYLE

## PUNCH ADAPTERS

150 mm

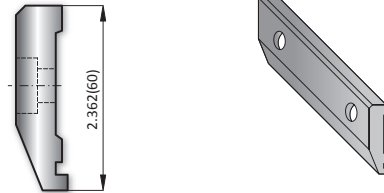
	L	H	T/mt	Mt
<b>50.950</b>	150	67.00	100	▶



USE WITH SAFETY CLAMP PLATE 50.571 OR 50.910

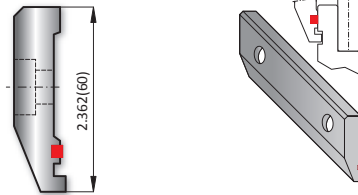
## CLAMP PLATES FOR ADAPTERS L=150mm

**50.571**



SAFETY CLAMP PLATE

**50.910**



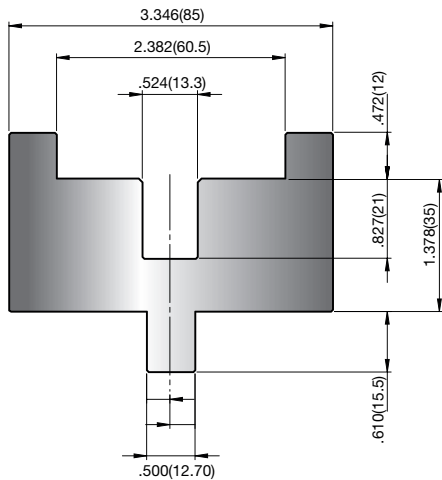
SAFETY CLAMP PLATE WITH POLYURETHANE FOR SEGMENTED PUNCHES

## DIE ADAPTERS/COMBINATION

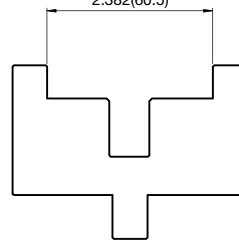
415 mm

835 mm

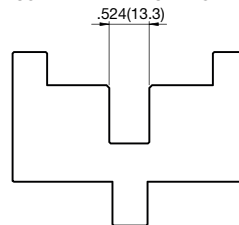
	H	T/mt	Mt
<b>60.980</b>	30	100	▶



FOR USE WITH EUROPEAN PRECISION STYLE DIES  
2.382(60.5)



FOR USE WITH WILA TRUMPF STYLE DIES  
.524(13.3)



[Dimensions in Inches (mm)]

# EUROPEAN PRECISION STYLE

## PUNCH EXTENSIONS

200 mm

	L	H	T/mt	Mt
<b>50.500</b>	200	220.00	90	▶

SAFETY CLAMP PLATE 50.499  
(CLAMP PLATE INCLUDED WITH 50.500)

200 mm

	L	H	T/mt	Mt
<b>50.501</b>	200	220.00	90	▶

SAFETY CLAMP PLATE 50.499  
(CLAMP PLATE INCLUDED WITH 50.501)

## DIE EXTENSION

415 mm  
835 mm

	L	H	T/mt	Mt
<b>60.919</b>	835	55.00	100	▶

INCLUDES (2) CLAMPS WITH HARDWARE  
(1) 50.861 AND (1) 50.860

## CLAMP PLATES FOR DIE EXTENSION

<b>50.861</b>	<b>50.860</b>
CLAMP PLATE FOR DIE EXTENSION	CLAMP PLATE FOR DIE EXTENSION

PUNCH AND DIE EXTENSIONS



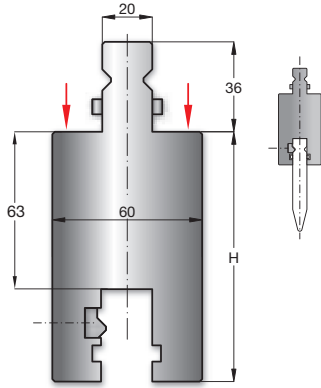
[Dimensions in Inches (mm)]

# WILA TRUMPF STYLE

## PUNCH EXTENSIONS

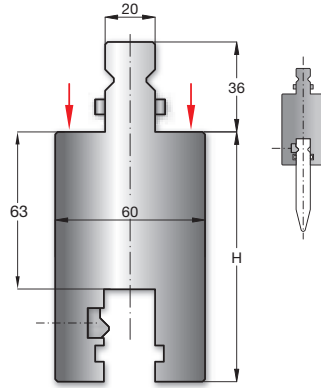
150 mm

	L	H	T/mt	Mt
<b>50.410</b>	150	100.00	100	



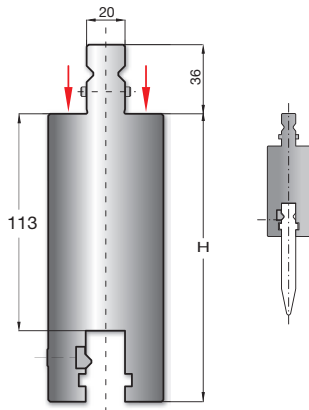
50 mm

	L	H	T/mt	Mt
<b>50.415</b>	50	100.00	100	



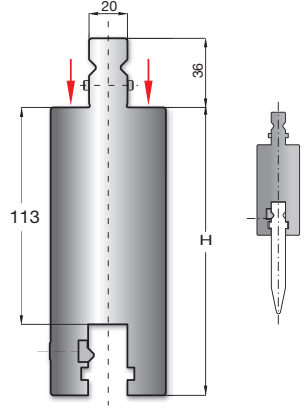
150 mm

	L	H	T/mt	Mt
<b>50.440</b>	150	150.00	100	



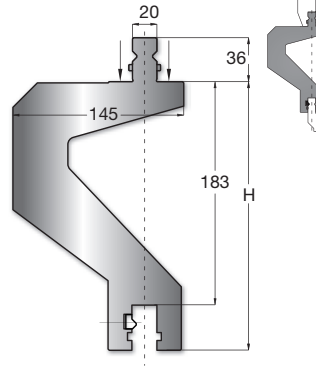
50 mm

	L	H	T/mt	Mt
<b>50.445</b>	50	150.00	100	



200 mm

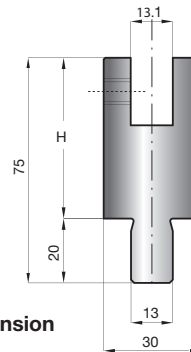
	L	H	T/mt	Mt
<b>50.503</b>	200	220.00	90	



## DIE EXTENSION

500 mm

	L	H	T/mt	Mt
<b>60.960S</b>	500	50.00	100	



WILA TRUMPF STYLE Extension

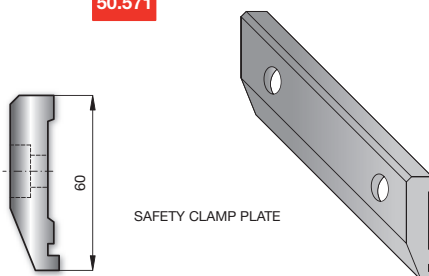
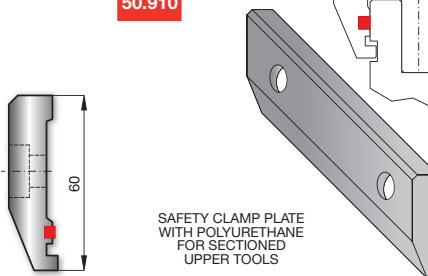
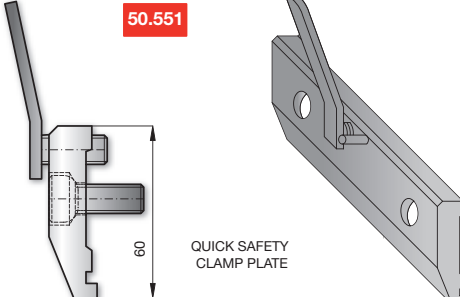
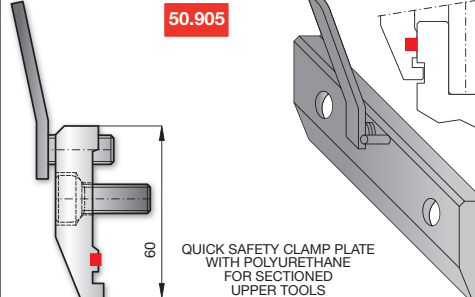
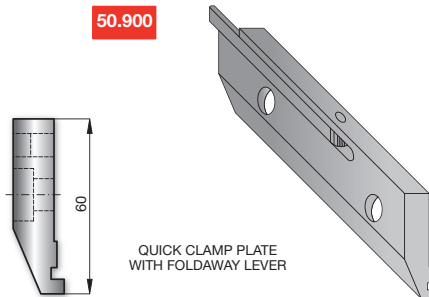
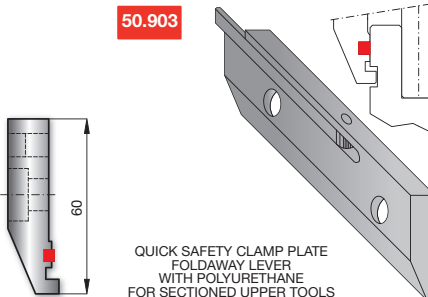


[Dimensions in Inches (mm)]

# CLAMP PLATES

## CLAMP PLATES FOR ADAPTERS – L=150mm

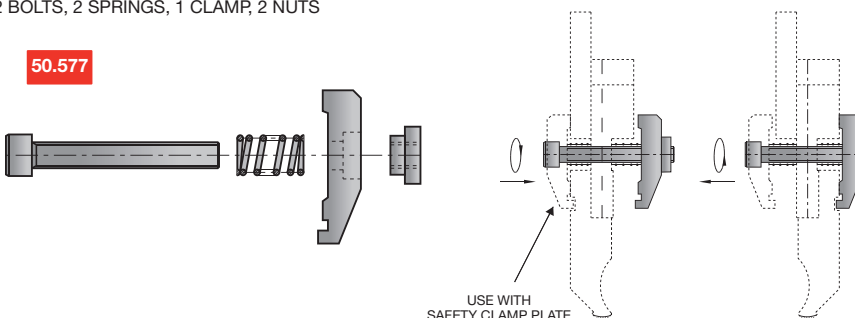
CLAMP PLATES INCLUDE 2 BOLTS, 2 SPRINGS, 1 CLAMP

<p><b>50.571</b></p>  <p>SAFETY CLAMP PLATE</p>	<p><b>50.910</b></p>  <p>SAFETY CLAMP PLATE WITH POLYURETHANE FOR SECTIONED UPPER TOOLS</p>
<p><b>50.551</b></p>  <p>QUICK SAFETY CLAMP PLATE</p>	<p><b>50.905</b></p>  <p>QUICK SAFETY CLAMP PLATE WITH POLYURETHANE FOR SECTIONED UPPER TOOLS</p>
<p><b>50.900</b></p>  <p>QUICK CLAMP PLATE WITH FOLDAWAY LEVER</p>	<p><b>50.903</b></p>  <p>QUICK SAFETY CLAMP PLATE FOLDAWAY LEVER WITH POLYURETHANE FOR SECTIONED UPPER TOOLS</p>

## EQUIPMENT FOR DOUBLE CLAMPING PLATE – L=150mm

INCLUDES 2 BOLTS, 2 SPRINGS, 1 CLAMP, 2 NUTS

**50.577**



USE WITH SAFETY CLAMP PLATE 50.571, 50.910, 50.551, 50.905, 50.900, OR 50.903

CLAMP QUANTITY GUIDE	
LENGTH	QUANTITY
1000mm	5
2100mm	10
3100mm	15
4100mm	20

[Dimensions in Inches (mm)]

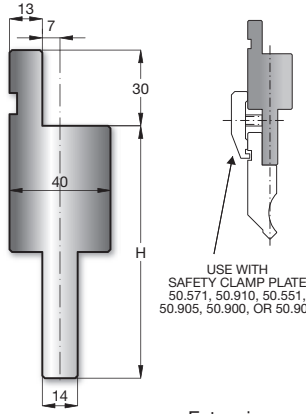


# EUROPEAN PRECISION STYLE ADAPTERS

150 mm

L H T/mt Mt

50.671 150 100.00 100 ▶



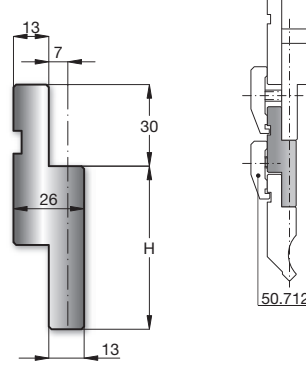
Extension  
(Manual Adapter)

USE WITH  
SAFETY CLAMP PLATE  
50.571, 50.910, 50.551,  
50.905, 50.900, OR 50.903

150 mm

L H T/mt Mt

50.959 150 60.00 100 ▶



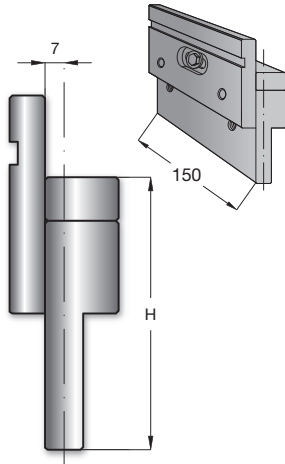
Extension  
(Manual Adapter)

50.712

150 mm

L H T/mt Mt

50.666 150 100.00 100 ▶  
50.668 150 120.00 100 ▶  
50.512 150 150.00 100 ▶



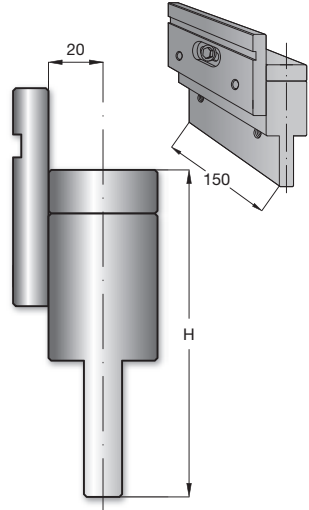
CLAMP PLATES NOT INCLUDED

Extension  
(Adjustable Adapter)

150 mm

L H T/mt Mt

50.667 150 120.00 100 ▶  
50.669 150 150.00 100 ▶



CLAMP PLATES NOT INCLUDED

Extension  
(Adjustable Adapter)

### CLAMP QUANTITY GUIDE

LENGTH	QUANTITY
1000mm	5
2100mm	10
3100mm	15
4100mm	20



[Dimensions in Inches (mm)]

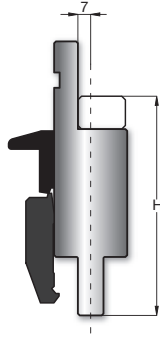
# EUROPEAN PRECISION STYLE CLAMPING

## FAST MANUAL CLAMPING

**SWING™**

150 mm

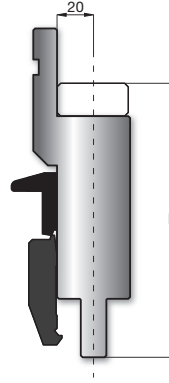
	L	H	T/mt	Mt
50.200	150	100.00	100	▶
50.210	150	120.00	100	▶
50.220	150	150.00	100	▶



Fast Manual Clamping European Precision Style

150 mm

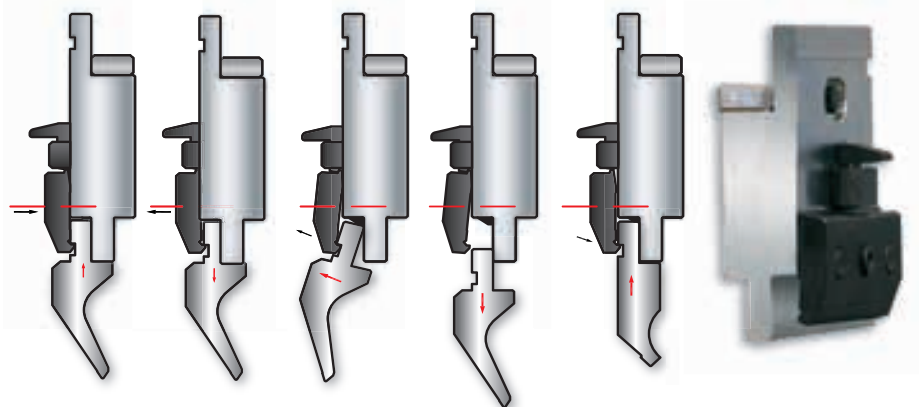
	L	H	T/mt	Mt
50.250	150	150.00	100	▶



Fast Manual Clamping European Precision Style

General guideline: 5 clamps per meter.

## OPERATION ILLUSTRATION



YouTube Video - SWING™ Fast Manual Clamping

SWING™ FAST MANUAL CLAMPING

CLAMP QUANTITY GUIDE	
LENGTH	QUANTITY
1000mm	5
2100mm	10
3100mm	15
4100mm	20

[Dimensions in Inches (mm)]

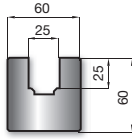


## POLYURETHANE HOLDERS

### EUROPEAN PRECISION STYLE URETHANE HOLDER

415 mm  
835 mm

20.271

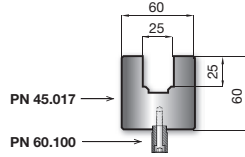


### WILA TRUMPF STYLE URETHANE HOLDER

410 mm  
830 mm

45.021

SET ASSEMBLY

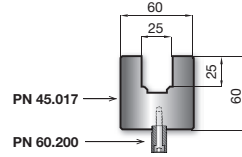


### AMERICAN STYLE URETHANE HOLDER

415 mm  
835 mm

45.025

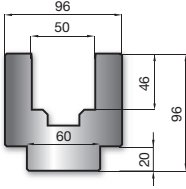
SET ASSEMBLY



### EUROPEAN PRECISION STYLE URETHANE HOLDER

415 mm  
835 mm

20.272

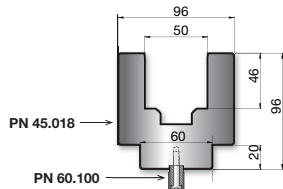


### WILA TRUMPF STYLE URETHANE HOLDER

415 mm  
835 mm

45.022

SET ASSEMBLY

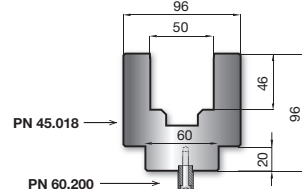


### AMERICAN STYLE URETHANE HOLDER

415 mm  
835 mm

45.026

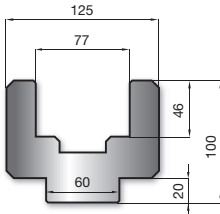
SET ASSEMBLY



### EUROPEAN PRECISION STYLE URETHANE HOLDER

415 mm  
835 mm

20.273

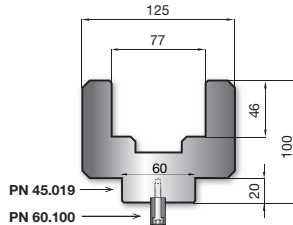


### WILA TRUMPF STYLE URETHANE HOLDER

415 mm  
835 mm

45.023

SET ASSEMBLY

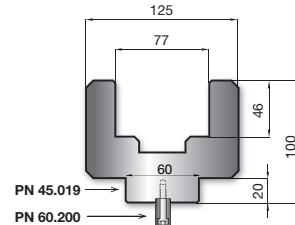


### AMERICAN STYLE URETHANE HOLDER

415 mm  
835 mm

45.027

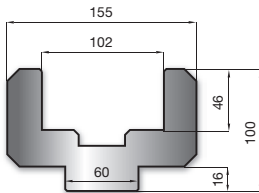
SET ASSEMBLY



### EUROPEAN PRECISION STYLE URETHANE HOLDER

415 mm  
835 mm

20.274

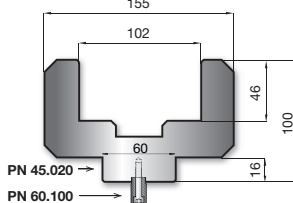


### WILA TRUMPF STYLE URETHANE HOLDER

415 mm  
835 mm

45.024

SET ASSEMBLY

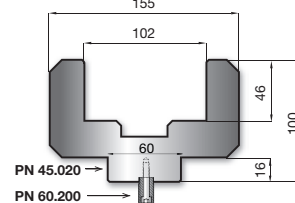


### AMERICAN STYLE URETHANE HOLDER

415 mm  
835 mm

45.028

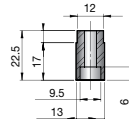
SET ASSEMBLY



### WILA TRUMPF STYLE BAR INSERT

410 mm  
830 mm

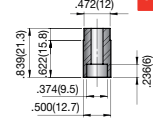
60.100



### AMERICAN STYLE BAR INSERT

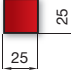
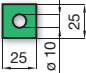
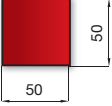
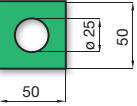
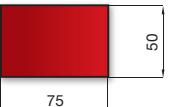
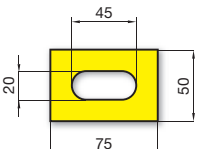
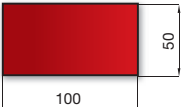
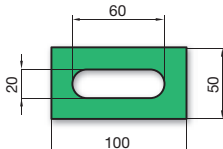
410 mm  
830 mm

60.200



[Dimensions in Inches (mm)]



<p style="text-align: center;"><b>URETHANE</b></p> <p>415 mm 835 mm</p> <p style="text-align: right;"><b>45.011</b></p> 	<p style="text-align: center;"><b>URETHANE WITH HOLE</b></p> <p>415 mm 835 mm</p> <p style="text-align: right;"><b>45.015</b></p> 
<p style="text-align: center;"><b>URETHANE</b></p> <p>415 mm 835 mm</p> <p style="text-align: right;"><b>45.010</b></p> 	<p style="text-align: center;"><b>URETHANE WITH HOLE</b></p> <p>415 mm 835 mm</p> <p style="text-align: right;"><b>45.014</b></p> 
<p style="text-align: center;"><b>URETHANE</b></p> <p>415 mm 835 mm</p> <p style="text-align: right;"><b>45.009</b></p> 	<p style="text-align: center;"><b>URETHANE WITH HOLE</b></p> <p>415 mm 835 mm</p> <p style="text-align: right;"><b>45.013</b></p> 
<p style="text-align: center;"><b>URETHANE</b></p> <p>415 mm 835 mm</p> <p style="text-align: right;"><b>45.008</b></p> 	<p style="text-align: center;"><b>URETHANE WITH HOLE</b></p> <p>415 mm 835 mm</p> <p style="text-align: right;"><b>45.012</b></p> 

90A	Red	25% deflection	Mild steel
80A	Green	35% deflection	Aluminum
60A	Yellow	40% deflection	CU & Alum

[Dimensions in Inches (mm)]



# SOLUTION GALLERY







visit [mate.com](http://mate.com)

## MATE PRECISION TOOLING

### WORLDWIDE HEADQUARTERS:

1295 Lund Boulevard, Anoka, Minnesota 55303 USA  
Tel +1.763.421.0230 Fax +1.763.421.0285 [mate.com](http://mate.com)

The Mate Logo is a registered trademark of Mate Precision Tooling Inc.  
Amada Promecam is a registered trademark of Amada Europe Corporation  
Trumpf is a registered trademark of Trumpf GMBH & Co.  
Wila is a registered trademark of WILA B.V.